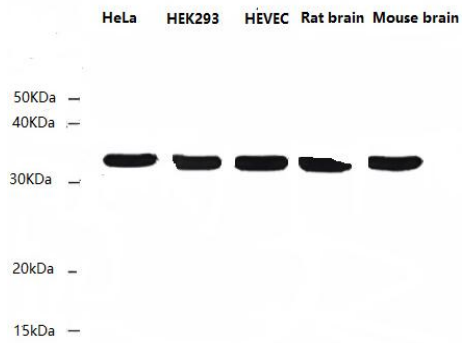


Anti-GAPDH Mouse Monoclonal antibody
Catalog Number:NL25201

Product Description

Description	Anti-GAPDH Mouse Monoclonal antibody
Another Name	Anti-GAPDH Mouse Monoclonal antibody
Catalog Number	NL25201
Size:	100 μ l
Tested Applications:	WB ,
Cited Applications:	WB. IHC, IF
Tested Reactivity:	Human , mouse Rat
Cited Reactivity:	Human , mouse Rat
Gene Symbol:	G3PD; GAPD; HEL-S-162eP
Immunogen :	A Synthetic peptide from human GAPDH
Concentration:	1mg/ml
Host/Isotype:	mouse/IgG
Class:	monoclonal
Type:	Antibody
Predictedmv:	36KDa
Observed mv:	36KDa
Uniprot:	p04406
Constituents:	PBS (without Mg ²⁺ and Ca ²⁺), pH 7.4, 150 mM NaCl, 50% glycerol
Storage Conditions:	Store at -20°C for one year after shipment
Background:	This gene encodes a member of the glyceraldehyde-3-phosphate dehydrogenase protein family. The encoded protein has been identified as a moonlighting protein based on its ability to perform mechanistically distinct functions. The product of this gene catalyzes an important energy-yielding step in carbohydrate metabolism, the reversible oxidative phosphorylation of glyceraldehyde-3-phosphate in the presence of inorganic phosphate and nicotinamide adenine dinucleotide (NAD). The encoded protein has additionally been identified to have uracil DNA glycosylase activity in the nucleus.

Tested Applications: WB



Various Samples (25ug) were subjected to SDS PAGE followed by western blot with Anti-GAPDH antibody (NL25201) at dilution of 1:3000